



### Proven profile design

- Outperforms other profiles in retention and durability.



Super Maxi Female 14

Mini Female 10 & Mini Male 09

### Blind male tip

- Enables easy application.
- Assists in eliminating disease transfer.
- Securely locks the two tags together.



Large Male 05

Medium Male 03

Small Male 11

### Swivel collar

- This unique feature allows the tags to automatically find their own point of gravity.



Small Female 12

Medium Female 04

### Marking options

- Number, names, year codes, dates, farm names, code number, barcodes and line illustrations are all possible with computer driven laser marking systems.



Female Button 02

Male Button 01

Large Female 06

# VISUAL tags



Male Button 01 ▶

Maxi Female 08 ▶

Universal spare pin 82



Universal Applicator 80



Lazamatic Applicator 85

Tag Pen 52



Optimark sets the highest standards for marked tags. Using the unique Optimark process, Allflex tags offer a cleaner face, better colour stability and improved contrast. Optimark technology has enabled the reintroduction of bright colours into the Allflex cattle tag range. Optimark is available in 05, 06 and 08 sizes.

Allflex provides superior product design and performance, reliable on-time delivery in full, dedicated technical support and exceptional customer service. Use Allflex to manage your livestock and identify the difference.



Tags shown at actual size

# ALLFLEX AUSTRALIA

For over five decades, Allflex have provided and supported the Livestock Identification industry with management devices that provide:

- superior product design and performance.
- reliable on-time delivery in full.
- dedicated technical support.
- exceptional customer service.

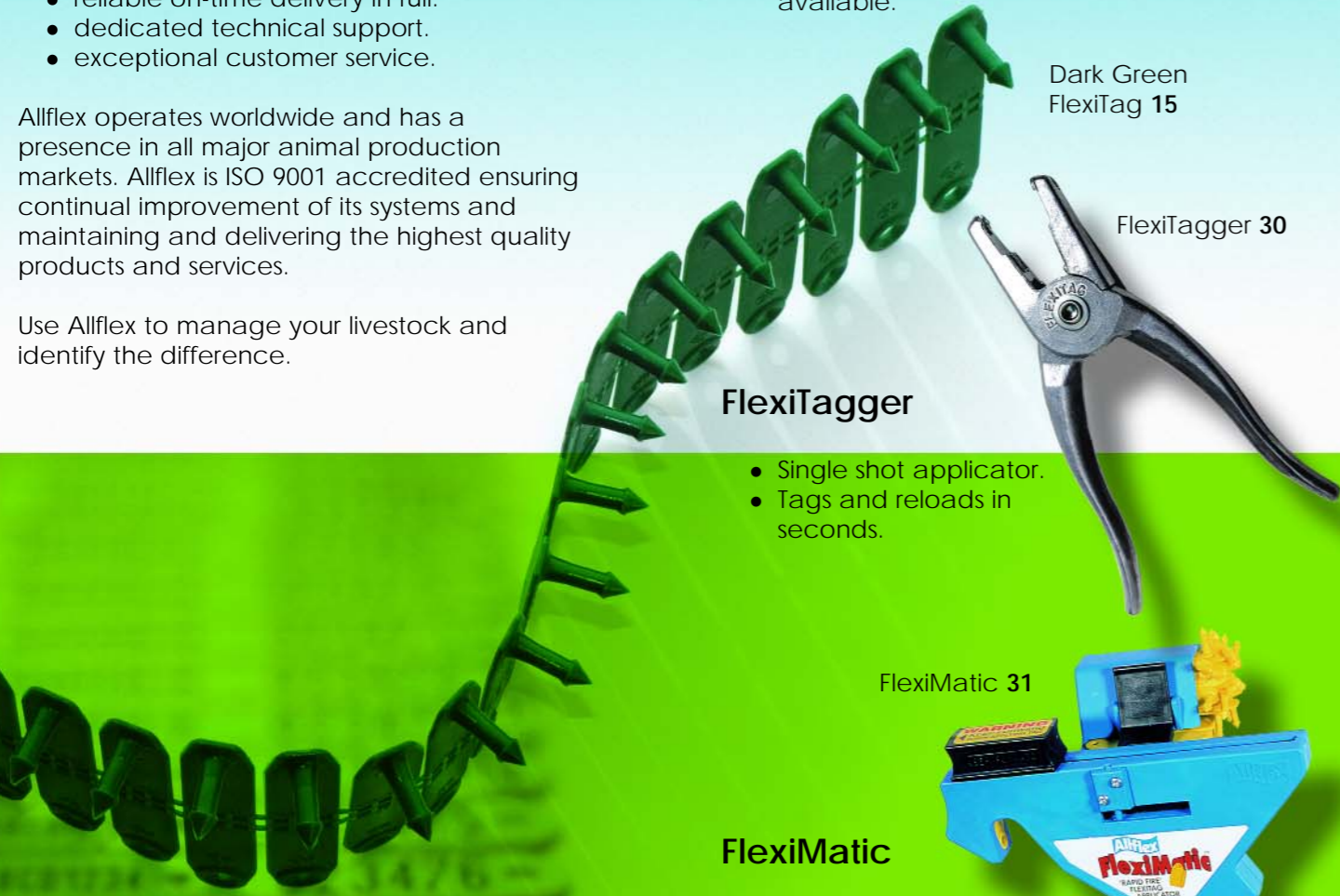
Allflex operates worldwide and has a presence in all major animal production markets. Allflex is ISO 9001 accredited ensuring continual improvement of its systems and maintaining and delivering the highest quality products and services.

Use Allflex to manage your livestock and identify the difference.

## One Piece Range

### FlexiTag

- NLIS compliant.
- Alpha numeric and printing options.
- 14 colours available.
- Ideal for lamb applications.
- One and two line stamping options available.



Dark Green FlexiTag 15

FlexiTagger 30

### FlexiTagger

- Single shot applicator.
- Tags and reloads in seconds.

FlexiMatic 31

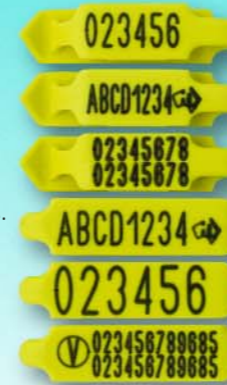
### FlexiMatic

- 25 shot rapid fire semi automatic applicator.
- Reloads ready to tag again in seconds.

### FlockTags

- NLIS compliant.
- Extra length for large, easily read numbers and/or letters.
- Simple operation.
- 14 highly visible colours.
- One and two line stamping options available.

FlockTags 19



### FlockTagger

- Ensures quick and easy application.



FlockTagger 29

### Security Tags

- Brass and Nickel Tags.
- One shot applicator.

Brass Tags 20  
Nickel Tags 21



One shot applicator 51

## FlexiTag & FlockTag colour range

### Australian year colours

Purple	2004
Yellow	2005
Red	2006
Blue	2007
Black	2008
White	2009
Orange	2010
Green	2011

### Additional Allflex colour range

Pink
Brown
Dark Blue
Dark Purple
Dark Green
Dark Red

Contact CRT Kyneton  
Corner Saleyards and Edgecombe Roads  
Kyneton 3444  
Vic

Ph: 03 54223796  
Fax: 03 54226798

[www.crtkyneton.com.au](http://www.crtkyneton.com.au)



**Allflex**  
Identify the Difference®